



FLOOR PLAN FOR WASSON LODGE

YMCA CAMP OCOEE - RETREATS & GROUP CAMPING

Wasson Cabins Floor Plan on reverse

Wasson Lodge Facility Info

Sleeps maximum 32 people

7 Sleeping Rooms

7 Bathrooms

2 Satellite TV/DVD players

**Sofas & Chairs in Common
Areas**

2 Gas Fireplaces

**Fully Furnished Kitchen
w/ 2 Ovens, Stovetop,
2 Dishwashers,
2 Refrigerators &
Dishes**

**Porch Overlooking
Lake Ocoee**

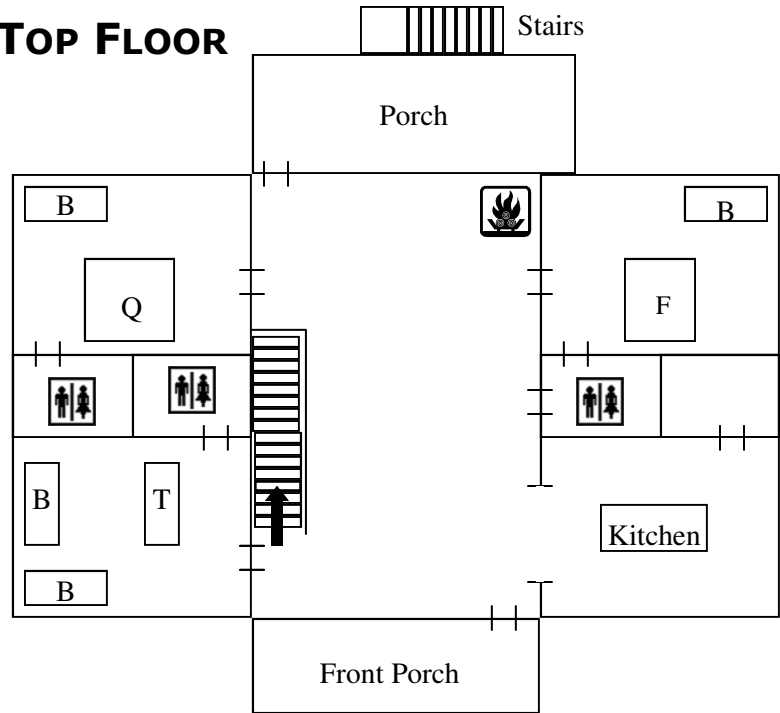
Hardwood Floors

**Pillows & Linens are not
provided
Additional Fee Applies**

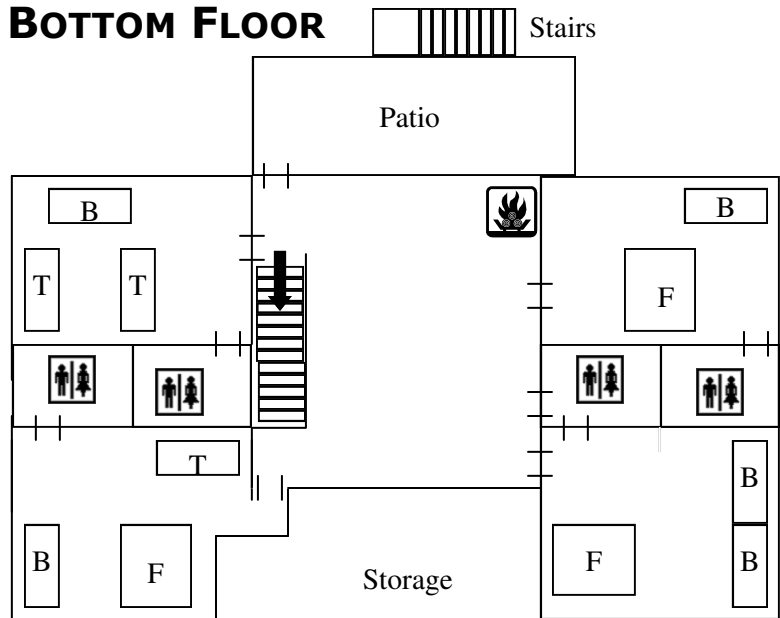
**Heating & Air Conditioning
For Year Round Comfort**

Handicap Accessible

TOP FLOOR



BOTTOM FLOOR



T - Twin Bed

B - Bunk Bed

F - Full Bed

Q - Queen Bed

YMCA Camp Ocoee

Business Office

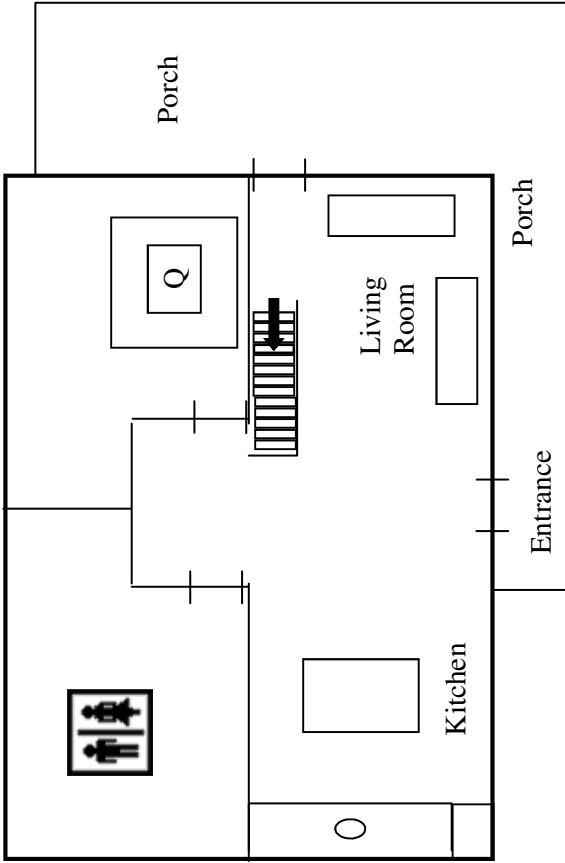
111 YMCA Drive, Ocoee, TN 37361

Tel: 423-338-5588

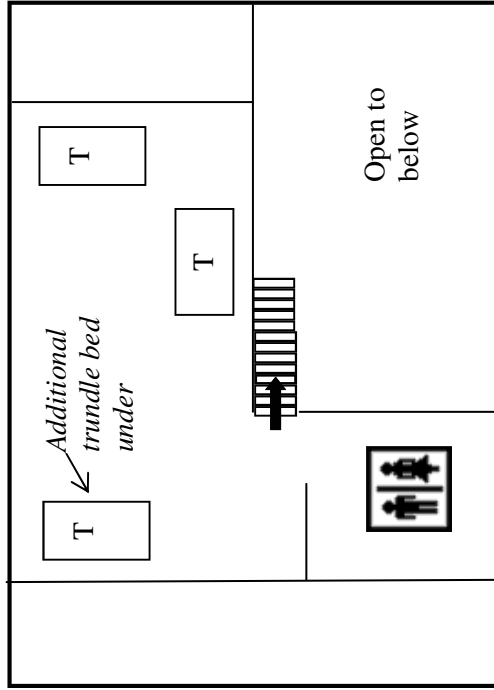
Web: www.wassonrentals.com



Downstairs of Cabin 1



Upstairs of Cabin 1



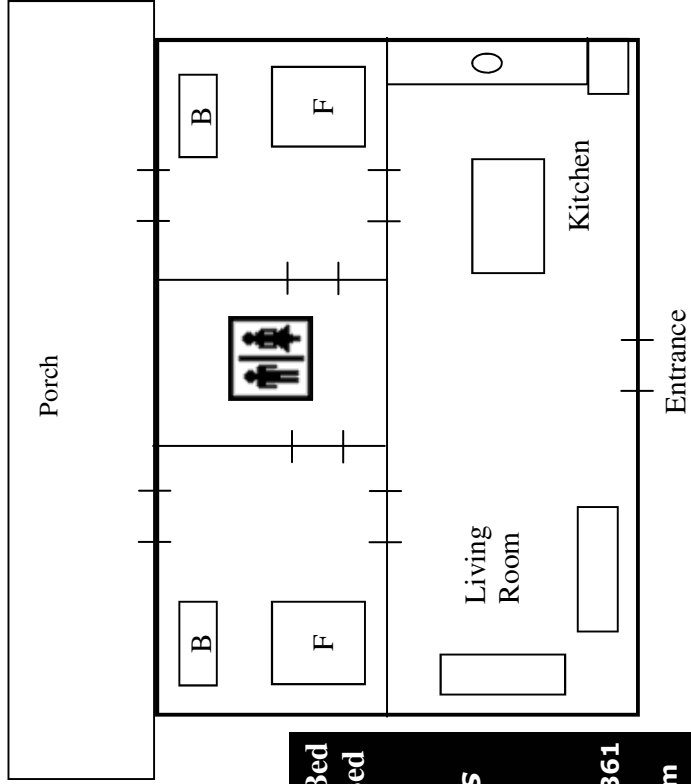
Cabin #1 - Loft
(layout on left)

Sleeps 6 total
 Full Kitchen w/ Oven, Stovetop, Fridge & Dishes
 Porch Overlooking Lake Ocoee
 Hardwood Floors
 Heating & Air Conditioning For Year Round Comfort
 1 1/2 baths
 Pillows & Linens Not Provided

Cabins #2, 3 & 4
(layout on right)

Each cabin contain the following
 Sleeps 8 total
 Full Kitchen w/ Oven, Stovetop, Fridge & Dishes
 Porch
 Heating & Air Conditioning For Year Round Comfort
 One Shared Bathroom
 Pillows & Linens Not Provided

Floor Plan Cabins 2, 3 & 4



T - Twin Bed
 F - Full Bed
 B - Bunk Bed
 Q - Queen Bed

**Linens not provided
 Additional Fee Applies**

YMCA Camp Ocoee
 Business Office

111 YMCA Drive, Ocoee, TN 37361
 Tel: 423-338-5588
 Web: www.wassonrentals.com